

## *Rosen Place on 8th Assisted Living...*

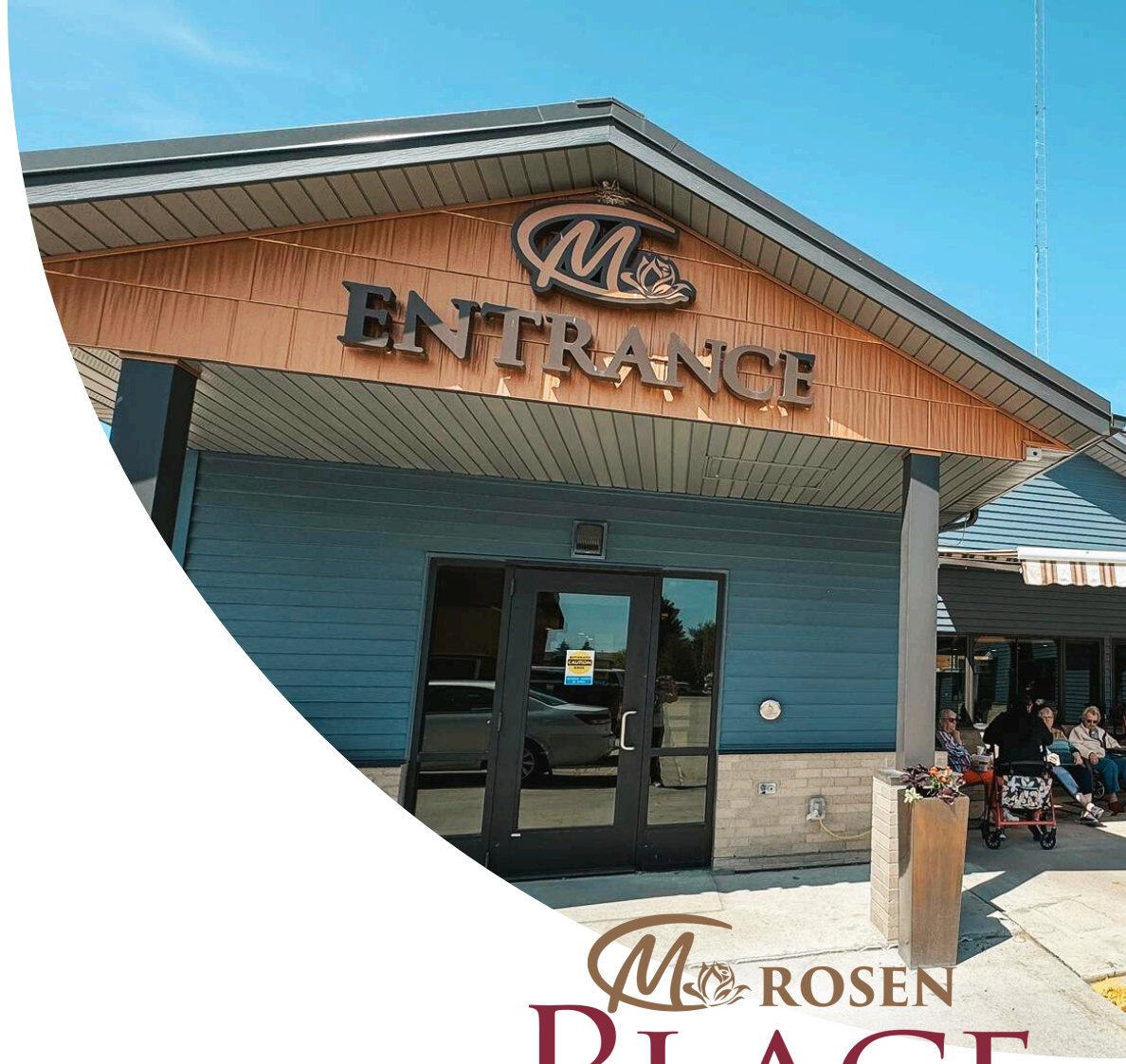
provides essential services for residents of Stanley and Mountrail County as part of Mountrail Bethel Home. Assisted living is an increasingly popular choice for seniors, combining independence with 24/7 personal care. These communities foster social engagement and enhance quality of life compared to unassisted living.

As part of the Mountrail County Health Center, Rosen Place offers a full continuum of care as a Continuing Care Retirement Community (CCRC). Residents enjoy access to amenities connected to Mountrail Bethel Home, the Medical Center, and the Aquatic Center such as:

- **State of the Art Warm Water Therapeutic Indoor Pool**
- **11 Bed Acute Care Hospital**
- **24 Hour Emergency Room Services**
- **14 Exam Room Healthcare Clinic**
- **Full Range of X-Ray and Lab Services**
- **CT Scanner & 3-D Mammography**
- **Physical Therapy Services**



Rosen Place On 8th Assisted Living  
PO Box 700  
607 8th Ave SE  
Stanley, North Dakota 58784



 **ROSEN  
PLACE**

**ON EIGHTH**

**-ASSISTED LIVING-**

*Many Avenues...*

*One Goal...*

*Your Health...*

## Our Mission:

To provide residential style accommodations and individualized support services to meet the occupant's needs and abilities to maintain as much independence as possible. Rosen Place on 8th features:

- 9 Single Bedroom Units
- 5 Double Bedroom Units
- 2 Units ADA Compliant



## Services:

The services provided at Rosen Place on 8th include, but are not limited to the following:

- 24/7 Staffed Call System
- Basic Cable and Internet
- Bathing and Dressing Assistance
- Three Meals a Day
- Laundry & Housekeeping Assistance
- Medication Management and Administration
- In Unit Meal Tray Delivery
- In Unit Washer and Dryer
- Lab, Radiology, Hospital and Clinic Services



## Monthly Basic Pricing:

- Occupied 1-Bedroom Unit—\$4,150 for a Single
- Occupied 2-Bedroom Unit—\$4,600 for a Single
- Second Person in a unit is an additional \$1,300 per month
- Rates are subject to change

## Items included in the above base rates:

- In Unit Washer and Dryers
- All Meals in the Dining Room
- Electricity, Heat and City Services
- Light Housekeeping
- Recreational and Social Services
- 24 hour staffed call system
- Basic Cable and Internet

## Tiered Level of Services Beyond Basic Care:

At Rosen Place, you'll find 3 service options:

### Tier 1 – \$400/month

Provides assistance for one ADL, along with support for activities, meals, and all included amenities and services.

### Tier 2 – \$800/month

Provides assistance for two ADLs, along with support for activities, meals, and all included amenities and services.

### Tier 3 – \$1,200/month

Includes assistance for three ADLs, plus support for activities, meals, and all included amenities and services.

## Schedule your tour today!

Please contact the Rosen Place on 8th Assisted Living Director for more information.

**Marcie Johnson, MOT, OTR/L**  
**Phone: 701-628-8653**



 Rosen Place Director - 701-628-8653

